

Perfect A Smile® Pontic Aligner Paint

Pontic Paint for Thermoformed Plastic Aligners / Clear Retainers

INDICATIONS FOR USE: The Perfect A Smile™ Pontic Paint is intended for use as a light cure coloring agent of thermoplastic aligners.

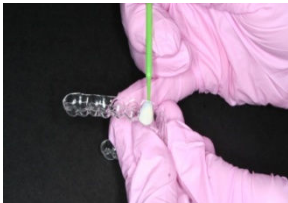
This patented formula works with clear thermoforming aligner plastics. It is not recommended for use with cloudy (C) thermoforming materials.

**** LIGHT SENSITIVE ! PRODUCT MUST BE PROTECTED FROM LIGHT! ****

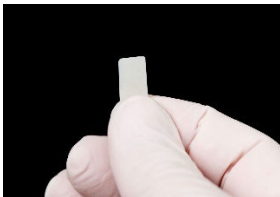
****KEEP LID ON JAR WHEN NOT IN USE****

INSTRUCTIONS FOR USE:

1. To ensure uniformity due to settlement of the product, mix the pontic paint thoroughly with a spatula until uniform. **PRODUCT MUST BE MIXED BEFORE EACH USE.**
2. Remove the amount desired and place on mixing pad. **IMMEDIATELY REPLACE THE LID TO PROTECT FROM LIGHT.**



3. Apply 3-4 coats of the pontic paint with a microbrush applicator, stroking over each coat several times. Light cure for 10 seconds at close range with a dental curing light after each coat. **NOTE: Shades can be mixed ON A MIXING PAD to achieve the color desired.**
4. After final coat is applied and light cured, perform a final light cure through the aligner for 20 seconds from the labial and lingual surfaces.



Please Note: The Reliance Shade Guide for the Perfect A Smile™ Pontic Paint system is not intended to be identical to the Vita® Shade Guide. **The shade guide is a representation of the colors that can be achieved with the Perfect A Smile Pontic Paints.** Different aligner materials will result in slight variation to shade appearance. For the most accurate matching with your aligner material, fabricate a shade guide by placing 3 coats of each shade on a wax covered mixing pad, light curing for 10 seconds between coats. The final polymerized template can then be lifted off the mixing pad and held up to the tooth for matching purposes.

Reorder Information: New Light Shade Catalog# PASL, New Medium Shade Catalog # PASM (Matching the Invisalign™ PVS shade Light and Medium)

Perfect A Smile Original Shade Catalog# Light (PPB1), Medium (PPA2) and Dark (PPA3)



PRECAUTIONS: Unpolymerized resins may cause skin sensation in susceptible persons. In case of contact with the skin, wash thoroughly with soap and water. Contact with other tissues: rinse spill area immediately with copious amounts of water for several minutes. **DO NOT INHALE FUMES. USE IN A WELL VENTILATED AREA.**

Use of UV, halogen and LED curing lights can be associated with eye damage. The patient, doctor and the assistant should wear properly designed protective eyewear when using these light curing devices.



TEMPERATURE LIMITATION: Store at room temperature (15-30 °C /not to exceed 86 °F).

WARRANTY: Reliance Orthodontic Products Inc. recognizes its responsibility to replace products if proven to be defective. Reliance Orthodontic Products, Inc does not accept liability for any damages or loss, direct or consequential, stemming from the use of or inability to use the products as described. Before using, it is the responsibility of the user to determine the suitability of the product for its intended use. The user assumes all risk and liability in connection therewith.

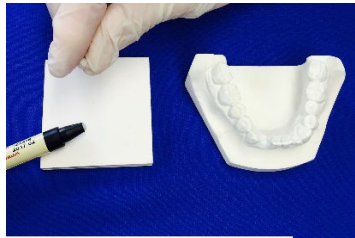
Rx Only: U.S. Federal law restricts this device to sale by or on the order of a dental professional.

CREATING A TEMPORARY TOOTH ON A STONE MODEL

Replace the missing tooth or teeth with any denture tooth shaped to properly fill the edentulous space. Flowtain™ can be used to hold the denture tooth in place.



Use composite to build a tooth shape.



Roll approximately ½ gram of Light Bond™ Operative between your index and thumb.



Place roll of composite on gingival surface of the missing tooth socket and lightly depress ball of composite between thumb and index to produce incisal height slightly shorter than adjacent teeth*. Precise shaping of the incisal, mesial and distal can be done with an instrument.



Light Cure for 30 seconds from 2 (two) angles.



Finished tooth formation

The above process takes less than one minute from start to finish.

Fractured or worn teeth can be repaired or altered in shape with Light Bond® Operative.

***IMPORTANT!** For a single pontic tooth on the model, create the incisal edge slightly shorter (approx. 0.5mm) than the adjacent teeth. This compensates for the thickness of the aligner material on the facial surface of the adjacent teeth once the aligner socket is painted.

For multiple or adjacent teeth, (for an exact match), form the pontic tooth on the model to the exact incisal height of adjacent teeth. To allow room for the paint on existing teeth in the aligner socket, apply a thin coat of Flow Tain™ on the facial surfaces of adjacent teeth - similar to the protocol for bleaching relief voids in bleaching trays.



Reliance Orthodontic Products, Inc.

1540 West Thorndale Ave., Itasca, IL 60143 U.S.A.
1-800-323-4348 · www.RelianceOrthodontics.com

Scan for more information



EMERGO EUROPE
Molenstraat 15
2513 BH, The Hague
The Netherlands

Australian Sponsor: Emergo
Australia
Level 20, Tower II, Darling Park
201 Sussex St.
Sydney, NSW 2000 Australia